



north elevation
1/75

north facade, spatial separation
exposing building face - 70.69 m²
limiting distance - 12.0m
allowable area @ 100% - 70.69 m²
proposed area = 2.46 m²

south facade, spatial separation
exposing building face - 70.69 m²
limiting distance - 3.0m
allowable area @ 13.5% - 9.54 m²
proposed area = 2.70 m²



west elevation
1/75

west facade, spatial separation
exposing building face - 246.24 m²
limiting distance - 3.0m
allowable area @ 10.0% - 24.62 m²
proposed area = 21.60 m²

east facade, spatial separation
exposing building face - 243.15 m²
limiting distance - 13.5m
allowable area @ 64.0% - 155.62 m²
proposed area = 29.48 m²



south elevation
1/75

OBSCURE GLAZING
TYP. THIS ELEVATION



east elevation
1/75

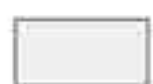
finish schedule



BOARD & BATTEN
BENJAMIN MOORE OC-57
WHITE HERON



LAP SIDING
BENJAMIN MOORE 2124-10
WROUGHT IRON



TRIM AND CASINGS
BENJAMIN MOORE OC-68
DISTANT GRAY



ENTRY DOOR
MAJONITE BELVILLE 1 VERTICAL LIGHT
OAK FIBREGLASS



PATIO DOORS
FIBREGLASS, PAINT FINISH
BENJAMIN MOORE 1531
MIDNIGHT OIL



GARAGE DOOR
STEEL CRAFT "FLUSH" 4 PANEL, PAINT FINISH
BENJAMIN MOORE 1531
MIDNIGHT OIL



WINDOWS / METALS
CASCADIA METALS
SLATE GREY

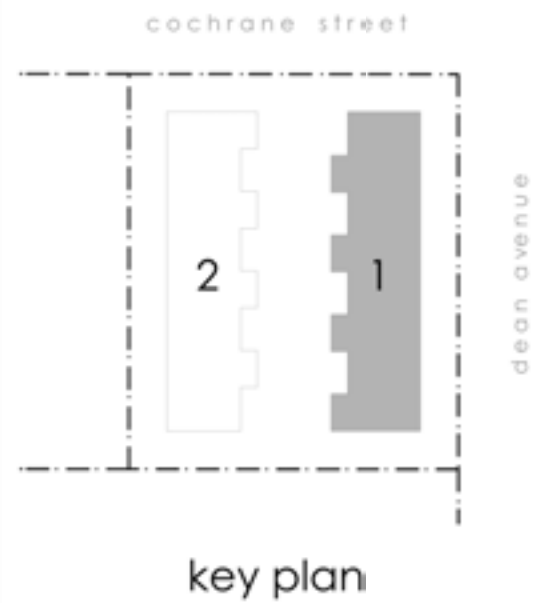


ASHPALT SHINGLE
MALARKY LEGACY
BLACK OAK



METAL STANDING SEAM
CASCADIA METALS
SLATE GREY

RECEIVED
March 20, 2025
PLANNING DEPT.
DISTRICT OF SAANICH



key plan



1899 Cochrane Street Proposed Townhouses			
TITLE	Block 1 Elevations	SCALE	as noted
FILE	FE24.25	DATE	March 18, 2025
PROJECT NO.	2333	SHEET NO.	A3.2
DRAWN BY	TDR	REV.	1A
ISSUE FOR	DVP		



north elevation
1/75

north facade, spatial separation
exposing building face - 70.69 m²
limiting distance - 12.0m
allowable area @ 10.0% - 70.69 m²
proposed area = 2.70 m²

south facade, spatial separation
exposing building face - 70.69 m²
limiting distance - 3.0m
allowable area @ 13.5% - 9.54 m²
proposed area = 2.46 m²



west elevation
1/75

west facade, spatial separation
exposing building face - 243.15 m²
limiting distance - 3.0m
allowable area @ 10.0% - 24.32 m²
proposed area = 24.12 m²

east facade, spatial separation
exposing building face - 246.24 m²
limiting distance - 3.0m
allowable area @ 10.0% - 24.62 m²
proposed area = 21.60 m²



south elevation
1/75

OBSCURE GLAZING
TYP. THIS ELEVATION



east elevation
1/75

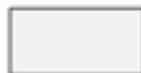
finish schedule



BOARD & BATTEN
BENJAMIN MOORE OC-57
WHITE HERON



LAP SIDING
BENJAMIN MOORE 2124-10
WROUGHT IRON



TRIM AND CASINGS
BENJAMIN MOORE OC-68
DISTANT GRAY



ENTRY DOOR
MASONITE BELVILLE 1 VERTICAL LIGHT
OAK FIBREGLASS



PATIO DOORS
FIBREGLASS, PAINT FINISH
BENJAMIN MOORE 1531
MIDNIGHT OIL



GARAGE DOOR
STEEL CRAFT "FLUSH" 4 PANEL, PAINT FINISH
BENJAMIN MOORE 1531
MIDNIGHT OIL



WINDOWS / METALS
CASCADIA METALS
SLATE GREY



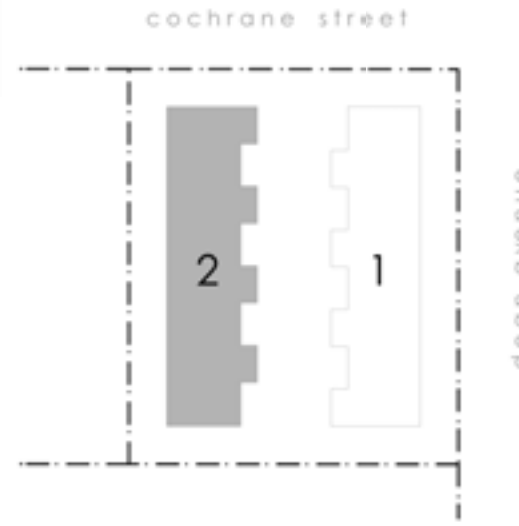
ASHPALT SHINGLE
MALARKEY LEGACY
BLACK OAK



METAL STANDING SEAM
CASCADIA METALS
SLATE GREY

RECEIVED

March 20, 2025
PLANNING DEPT.
DISTRICT OF SAANICH



key plan



1899 Cochrane Street Proposed Townhouses			
TITLE	Block 2 Elevations	SCALE	as noted
FILE	FE24.25	DATE	March 18, 2025
PROJECT NO.	2333	SHEET NO.	A3.4
DRAWN BY	TDR	REV.	1A
ISSUE FOR	DVP		